



ARNOLD CITY

INTERCHANGE IMPROVEMENTS

SR 70, Section D10 Arnold City Interchange Virtual Public Meeting

November 2021



Welcome

Project Team

- **Bill Kovach, P.E., District Executive**
- **Rachel Duda P.E., Assistant District Executive – Design**
- **Jeremy Shanneyfelt, P.E., PennDOT Project Manager**
- **Chuck Ziegler, P.E., Parsons Project Manager**

Purpose of this Virtual Public Meeting

- **Provide an Overview of I 70, Section D10 Project**
- **Review Progress to Date**
- **Review Anticipated Schedule**
- **Gather Feedback**

Project Introduction - SR 70, Section D10



I- 70 Arnold City Interchange Project Overview

Project Overview

I-70 Reconstruction

- **Approximately 1.9 miles of reconstruction**
- **Interchange Geometry will be improved to provide adequate ramp lengths for traffic to safely exit from and merge onto I-70**
- **Shoulder and median widths improved**
- **The grades on the ramps will be reduced to meet current standards**

Finley Road

- **Approximately 1,300 feet of Finley Road (SR 3011) will be reconstructed to provide improved geometry and wider roadway and shoulders.**

I- 70 Arnold City Interchange Project Overview

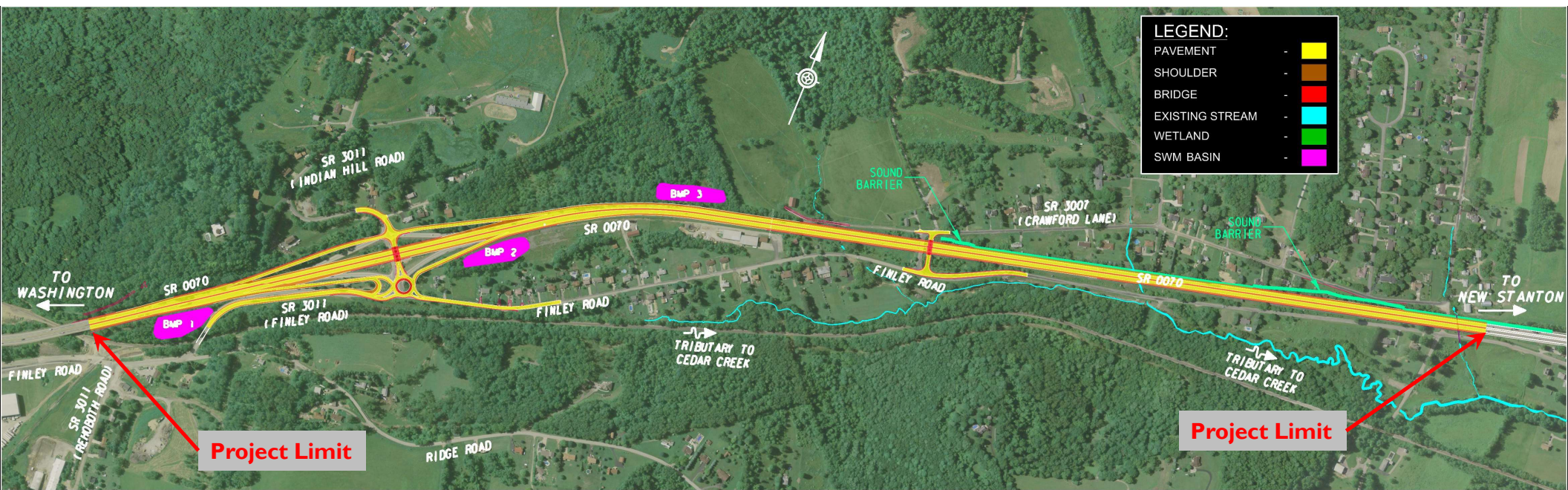
Project Schedule



I- 70 Arnold City Interchange Project Overview

I-70 Reconstruction

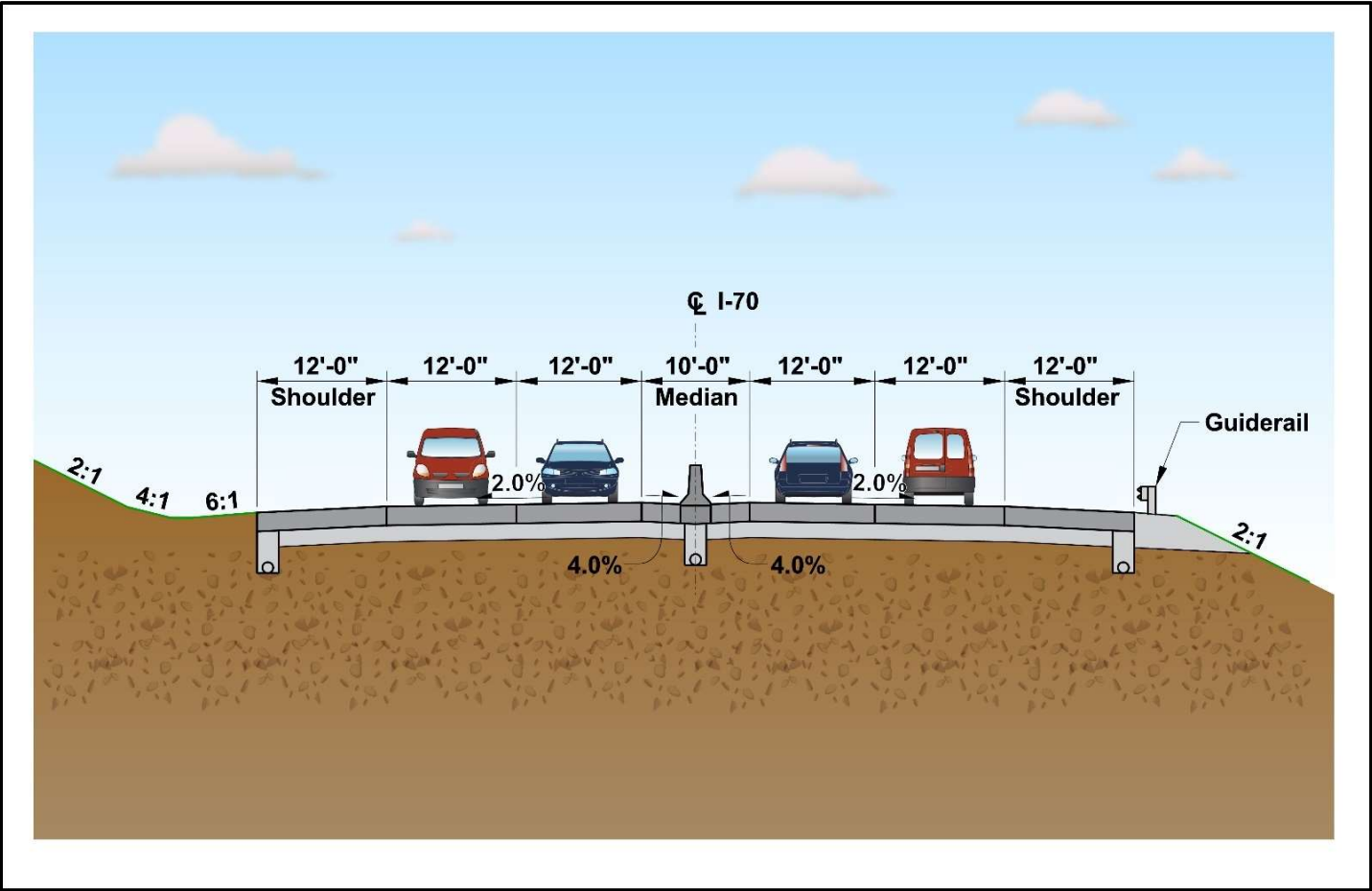
- Reconstruction includes full depth pavement replacement, drainage improvements and stormwater management
- Overpass structures replaced and grades improved to provide adequate clearance



I- 70 Arnold City Interchange Project Overview

I-70 Typical Section

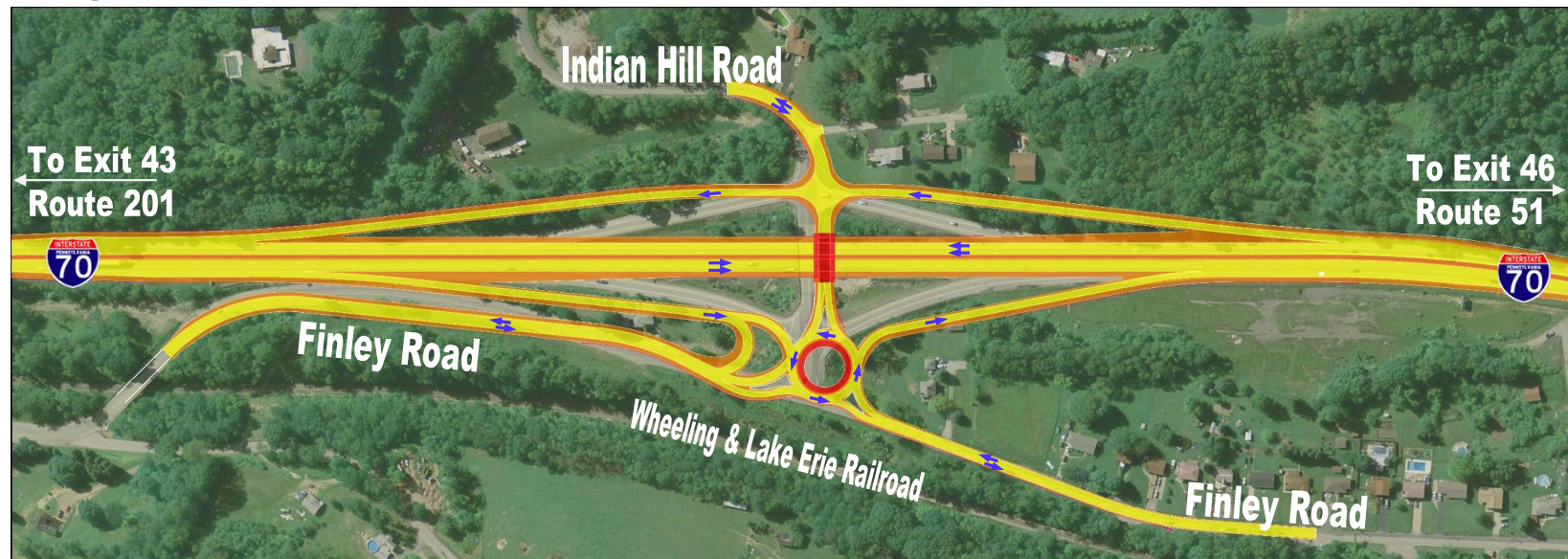
- Four 12' Travel Lanes
- Median Widened to 10'
- Outside Shoulders Widened to 12'



I- 70 Arnold City Interchange Project Overview

Interchange Reconstruction

- Interchange Geometry will be improved to provide adequate ramp lengths for traffic to safely exit from and merge onto I-70
- The grades on the ramps will be reduced to meet current standards
- Roundabout to combine the eastbound ramps/Indian Hill Road Intersection and the Indian Hill Road/Finley Road Intersections



Structures

- **Indian Hill Road Bridge over I-70 replaced to provide adequate width and vertical clearance (16'6" minimum) for I-70**
- **Crawford Lane Bridge over I-70 replaced to provide adequate width and vertical clearance for I-70**
 - Location shifted to east to allow new bridge to be constructed while existing bridge remains in use
- **New Retaining Wall required below Roundabout to protect railroad cut**
- **Existing 10' arch culvert to be extended to accommodate I-70 widening**



Environmental

- **Research and fieldwork was performed to identify and document**
 - Streams
 - Farmland
 - Potential Hazardous Waste
 - Noise
 - Wetlands
 - Threatened and Endangered Species
 - Archaeology
 - Above-Ground Historic Properties
- **Initial Environmental Clearance received December 13, 2019**
- **Waterway permit and NPDES permit currently being prepared**
- **Effects to streams and wetlands will be mitigated**
 - **Improvements to Cedar Creek in Cedar Creek park and State Game Lands #297**
- **Drainage will be improved**
 - **3 new stormwater management basins**

Environmental



- **Noise Studies being finalized for submittal to FHWA**
 - A Noise Impact Analysis report was prepared in July 2019 during preliminary design
 - Six Noise Study Areas (NSAs) were evaluated
 - Draft report indicates a sound barrier is warranted, feasible, and reasonable to construct for one Noise Study Area along the north (westbound) side of I-70 from the Crawford Lane bridge to the eastern end of the project near Nichols Hill Road
 - No other areas were determined to be reasonable to construct
 - Once the Noise Study is approved by FHWA, a meeting will be held with affected property owners

Utility Relocations

Several utilities within the project corridor will be relocated prior to or during construction.

- **Poles and Overhead Lines**
 - **West Penn Power**
 - **Verizon**
 - **Comcast**

- **Underground Facilities**
 - **Municipal Authority of Westmoreland County – 8-inch and 16-inch waterlines**
 - **Rostraver Township Sewage Authority - Sewer Lines along Finley Road**
 - **Williams – Gas Line crossing under I-70**

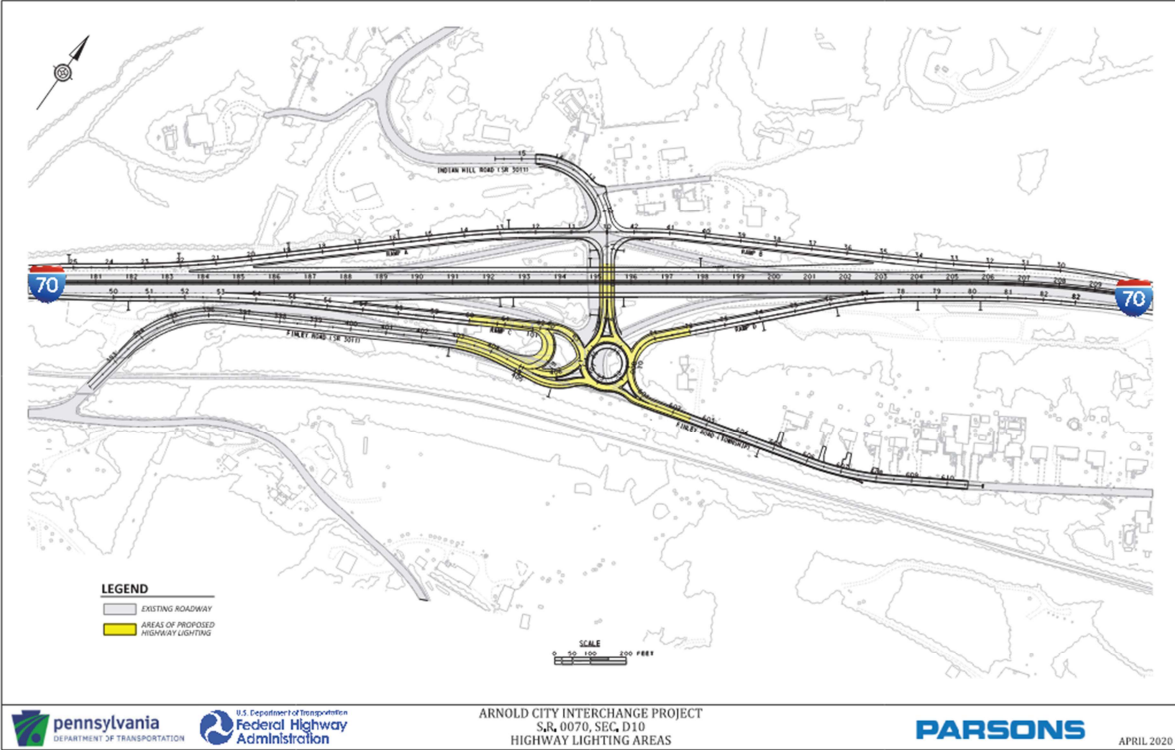
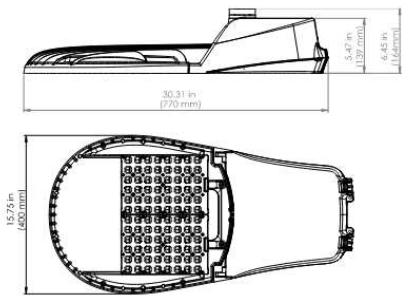
Highway Lighting

- **Lighting required at Roundabout**
- **Will be provided at all approaches to Roundabout (within 400')**
- **No lighting along Westbound Ramps**

GreenCobra™ LED Street Light GC2 G-Series Specification Data Sheet

Luminaire Data

Weight 25 lbs [11.3 kg]
EPA 0.77 ft²

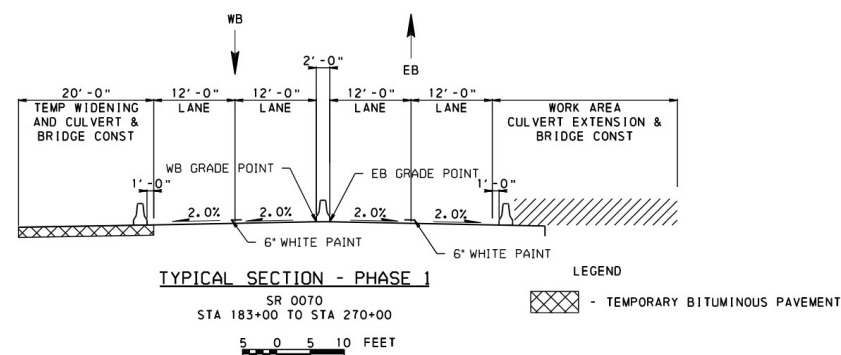


Maintenance of Traffic During Construction

- **This will be a Multi-Phase/Multi-Year Project.**
- **Some Phases will be concurrent with the adjacent 51 Interchange project and will require coordination.**
- **Two Lanes in each direction will maintained on I-70 during daytime.**
- **Overnight single lane closures on I-70 may be required**

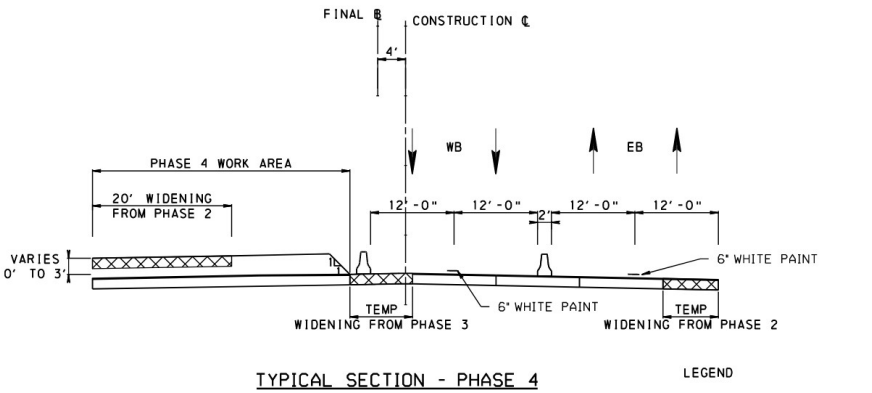
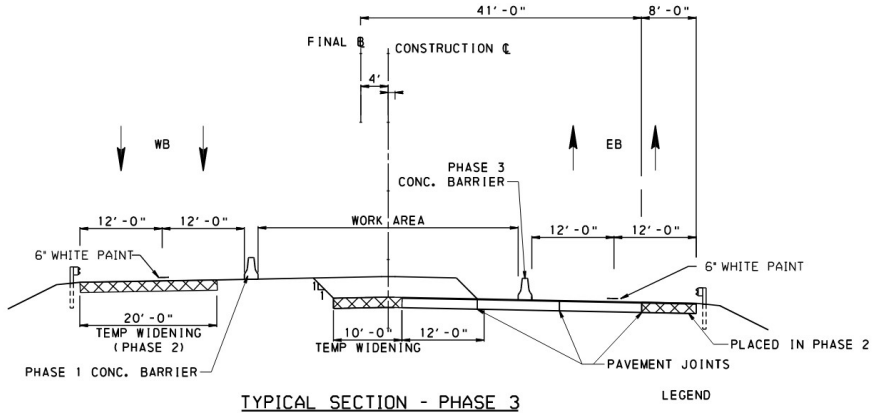
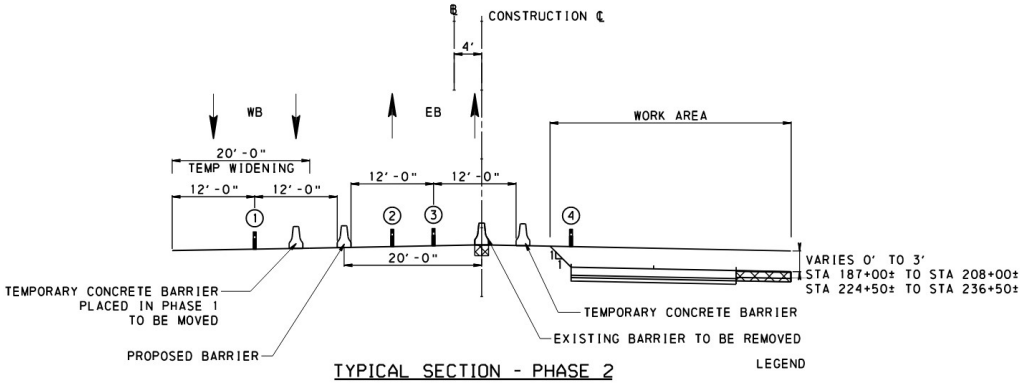
Maintenance of Traffic During Construction – Phase 1

- Includes reconstruction of bridges carrying Indian Hill Road and Crawford Lane over I-70.
- Westbound Shoulder closed to place temporary pavement.
- Phase I will require a detour while the Indian Hill Road Bridge is replaced.
- Access from Finley Road to I-70 Eastbound maintained on temporary road.
- Minor modifications along SR 201 (Exit 43) corridor to accommodate diverted traffic.



Maintenance of Traffic During Construction – Phases 2 Through 4

- **Reconstruction of I-70 maintaining two 12' wide lanes of traffic in each direction**



Project Web Site

To learn more about the improvements that have been or will be completed along I-70, please click the link below -

www.i-70projects.com/



To learn more about the operations and safety benefits of Roundabouts, please visit the links below -

<https://www.penndot.gov/ProjectAndPrograms/RoadDesignEnvironment/RoadDesign/Pages/Roundabouts.aspx>

<https://safety.fhwa.dot.gov/intersection/innovative/roundabouts/>

A large, 3D, gold-colored 'Thank You!' text is positioned in the upper left quadrant of the slide. The letters are blocky and have a slight shadow, giving them a three-dimensional appearance. The background behind the text is a blue gradient with a subtle pattern.

Please Submit Comments

**For more information, please
contact:**

**Jeremy Shaneyfelt, PE,
Project Manager
PENNDOT District 12-0
(724) 439-7321
jershaneyf@pa.gov**

**Chuck Ziegler, PE, Project
Manager
Parsons
(724) 742-9534
charles.ziegler@parsons.com**